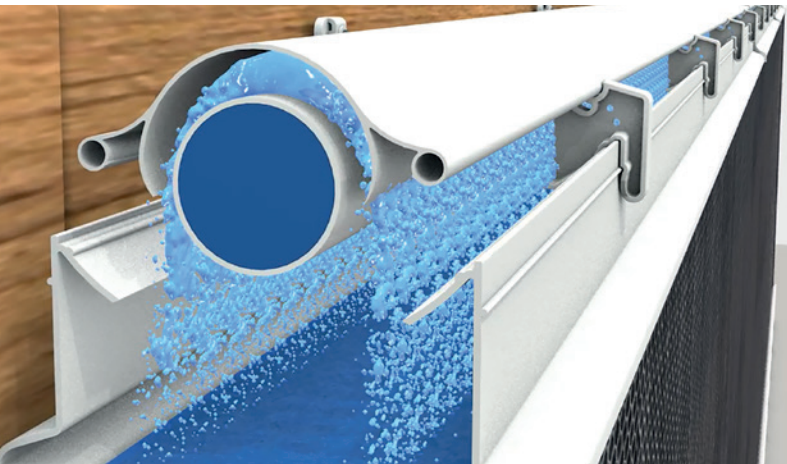


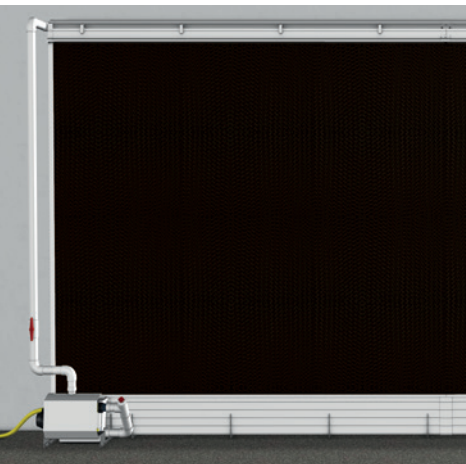
The BARKU Pad-Climate-System

BARKU

Being a full set with all required parts the BARKU Pad-Climate-System supplies stables, industrial facilities and greenhouses with the climate they need. It is deployed in areas where highly efficient cooling is re-quired. All parts made of plastic material can be used for various cooling purposes and can be particularly deployed for evaporative cooling in hot areas.



The new infinitely adjustable deflector spreads the water evenly across the whole Pad.



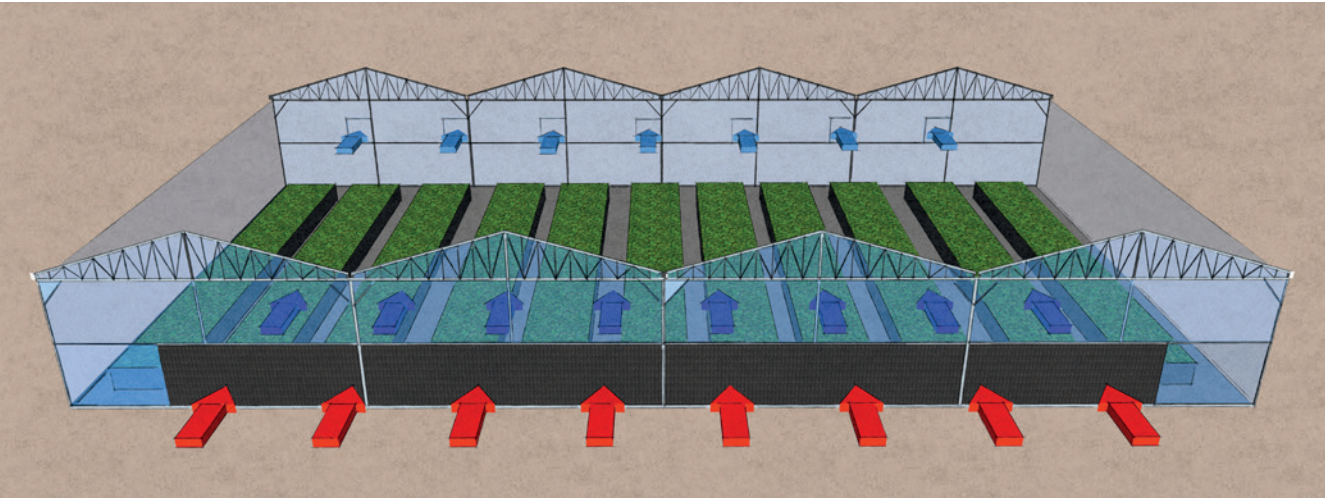
The system comes as a full set incl. supply unit.*

THE TECHNOLOGY OF EVAPORATIVE COOLING

A pump station transports water through the system and leads it to the Pads from above via a spray pipe and the deflector. Then the water flows across the rippled surface of the Pads. Some of the water evaporates through the warm and dry air flowing

through the Pads. The remaining water is used for cleaning the Pads and flows back to the supply unit through a water channel system. The thermal energy required for evaporation is taken directly from the air. This is why the air coming from the

Pads is cool and moist both at the same time – without any extra energy supply from outside for the evaporation process: This is how the completely natural cooling effect is generated.

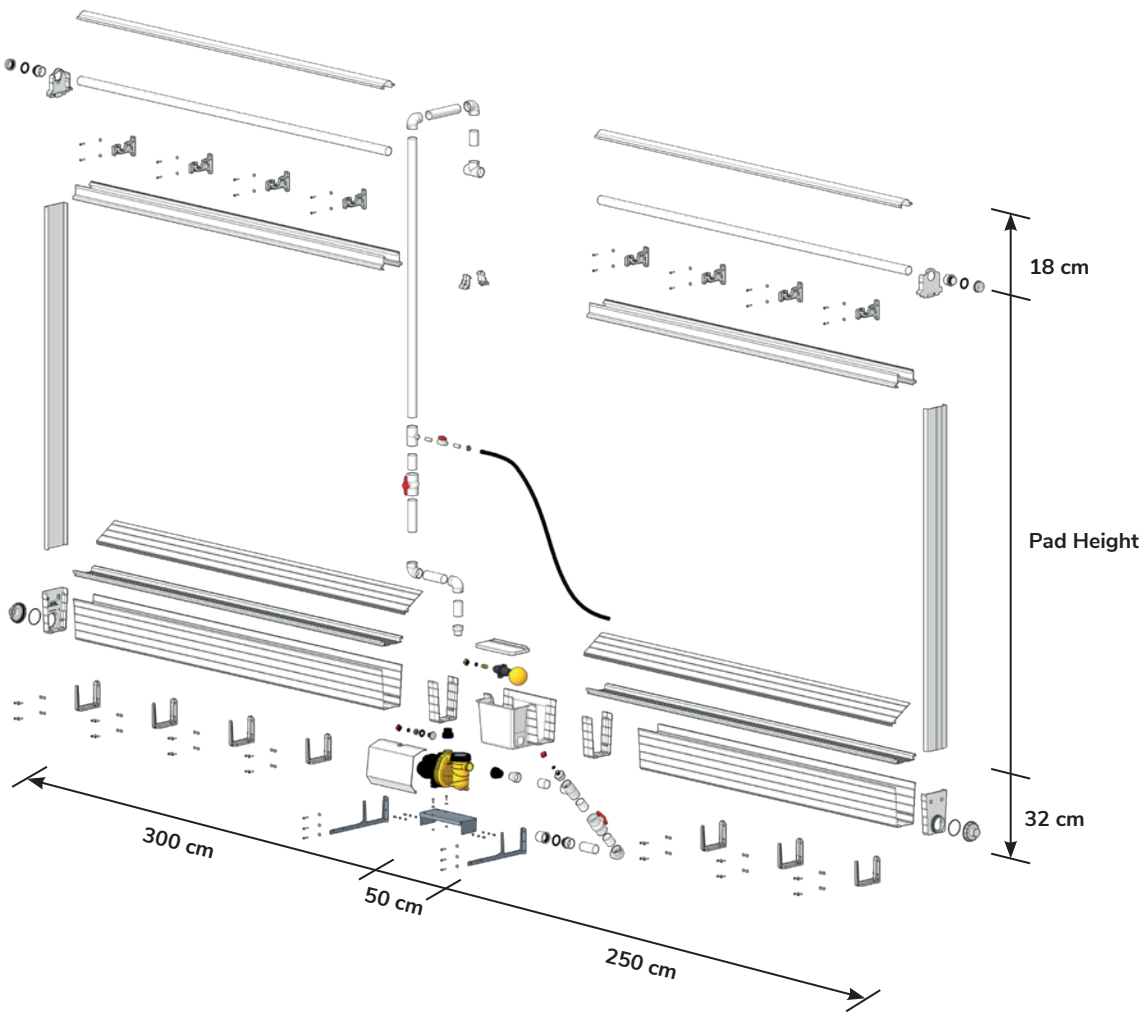


The right system for any stable size and facility: BARKU Pad-Climate-System is flexible, adjustable and efficient. Durability and easy installation make it your best choice for houses in hot climate zones.

Technical data

The system is available in the following versions:

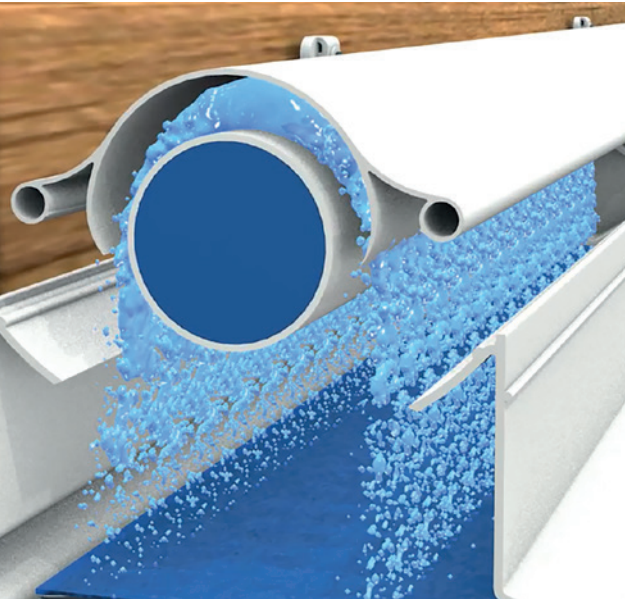
Art.-Nr.	Standard Basis Sets	Also available in versions with:
002 0 160 0	6 m Pad System Basis Set 6" 1x230V 50Hz	4 inch Pads
002 0 160 1	12 m Pad System Basis Set 6" 1x230V 50Hz	various pumps:
002 0 160 2	18 m Pad System Basis Set 6" 1x230V 50Hz	1x230V 50Hz 3x400V 60Hz
002 0 160 3	24 m Pad System Basis Set 6" 1x230V 50Hz	1x230V 60Hz 1x115V 60Hz
		3x400V 50Hz 3x346V 60Hz



BARKU
Barnstorfer Kunststofftechnik

Barnstorfer Kunststofftechnik GmbH & Co. KG
Rudolf-Diesel-Straße 2 · 49406 Barnstorf (Germany)
Tel.: +49 (0) 54 42 - 98 98-0 · Fax: +49 (0) 54 42 - 98 98-25
www.barku.de · info@barku.de

Barku Plastics, LLC
131 Corporate Drive, SW · Cleveland, TN 37311 - USA
Phone.: 423-614-0523 · Fax: 423-614-0524 · www.barkuplastics.com



PAD-CLIMATE-SYSTEM
for evaporative cooling

Your Advantages – from Installation through to Deployment

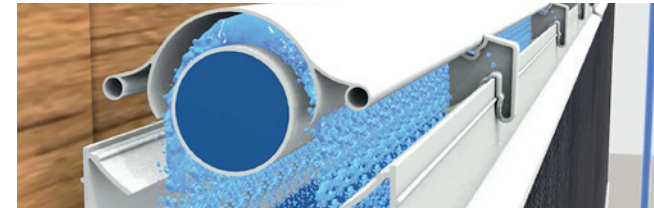
BARKU

The Pad-Climate-System is a highly flexible and extremely rational solution for efficient evaporative cooling and air moistening of stables, industrial facilities and greenhouses. In combination with the industry proven BARKU Plastic Pad, the BARKU Pad-Climate-System provides high performance and efficient cooling with reduced static pressure drop. Many advantages speak in favor of its deployment:

- All parts are made of stainless steel or UV-resistant PVC, preventing corrosion to system.
- The water gutter provides the required supply for peak system performance without the need for an external water tank.
- Deflector design with integrated hinge system provides the ideal water distribution over the entire pad length.
- Quick and easy installation.
- The components are completely watertight.
- Water quantity and distribution can be adjusted by infinitely turning the deflector.
- Available for Pad thickness in 4 or 6 inches.
- Well thought-out and highly stable system components allow for long-lasting deployment without any interruptions.
- Construction flexible in height up to 2,5 m and length up to 42 m.

WATER SUPPLY VIA THE BARKU DEFLECTOR

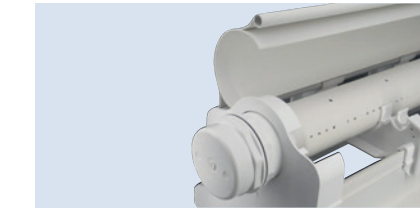
The deflector shape specially developed by BARKU guarantees a very even distribution of water across the entire length of the Pad system. Connecting multiple deflectors with each other is achieved through watertight connectors without the need for tools. By adjusting the deflector the desired water quantity can be controlled very accurately. Upon request, wires can be used in the already prepared holes in the gap between deflector and Pad in order to prevent birds and parasites from nesting inside the system. Various heights can be selected, depending on the fauna on site.



WATER DISTRIBUTION

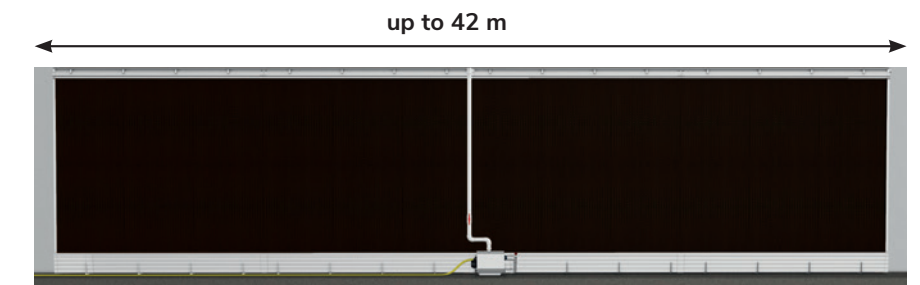
The deflector profile features an optimized shape to provide the best possible water distribution. This design allows for an even flow of water across all pads. Water quantity and distribution can be adjusted by infinitely tuning of the deflector.

NEW!
Optimized
Deflector-
System



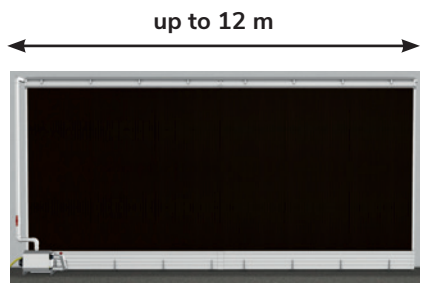
DEFLECTOR PROFILE

The newly designed deflector profile with an integrated hinge system allows easy access, quick inspection and an easier cleaning options.



CONNECTION IN THE MIDDLE

Depending on the stable layout and length, the supply unit can be attached in the middle or on the ends.



CONNECTION AT THE SIDE

THE SUPPLY UNIT

The newly developed supply unit is the main part of the BARKU Pad-Climate-System.

Technical features:

- fully pre-installed with self-priming pump with ¾ inch connection incl. hydro floating valve
- suitable for 4 inch as well as for 6 inch Pads
- integrated filter to catch dirt and debris
- Autonomous Pad cleaning cycle with fresh water supply

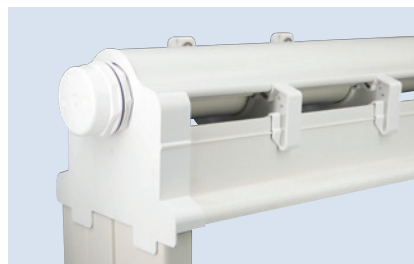
The supply unit is installed at the beginning of the assembly process. It can be attached at the middle as well as at the end of the Pad system and comes with all required connectors.



EASY INSTALLATION

Gluing surfaces and connecting parts are provided, allowing easy do-it-yourself installation. It comes with detailed and illustrated instructions. Only the wall brackets contained in the system need to be

installed with tools, while all other parts of the system are assembled using clip-on construction or glue. Up to an overall length of 42 meter system dimensions can be adjusted to your requirements.



PAD GUIDES

Pads are held firmly within the system by the pad guides.



CLIP-ON FUNCTION

All profiles can be attached to the pipe holder for easy assembly and disassembly.



SUPPLY UNIT

Complete with piping accessory as well as console and pump.



MAIN PART OF THE PAD-CLIMATE-SYSTEM

The centrifugal pump and the central water storage element are one unit.



CLEANING CYCLE

Via the extra ¾ inch connector the cleaning cycle can be controlled independently.



WATER STORAGE

The water channel and the storage contains all the water the system needs. No external water tank is required.



LIDS FOR THE WATER STORAGE

Water returns to the newly designed Pad lids. The lids also prevent mice and rats from intruding into the system.