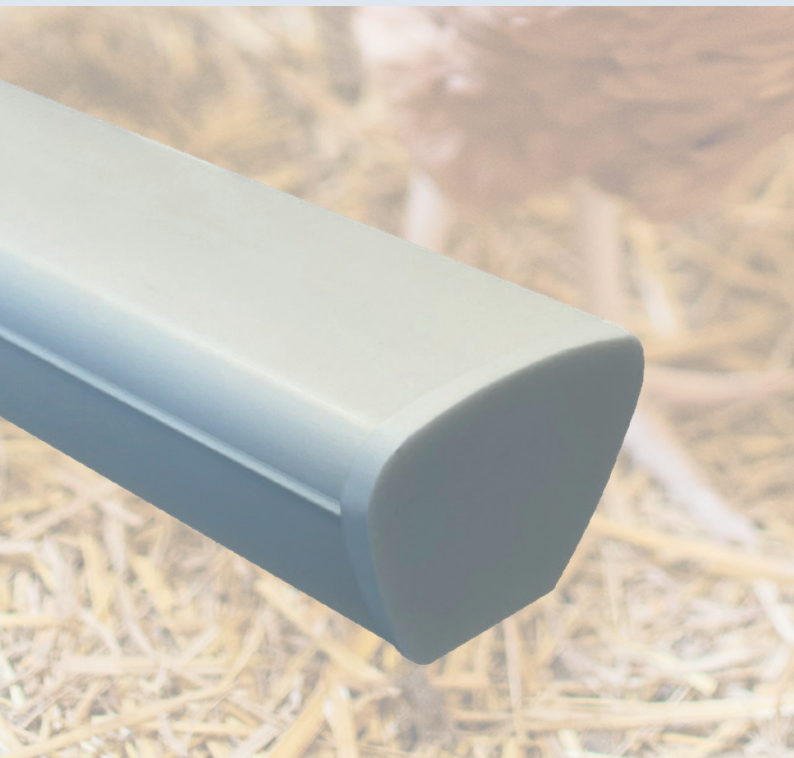
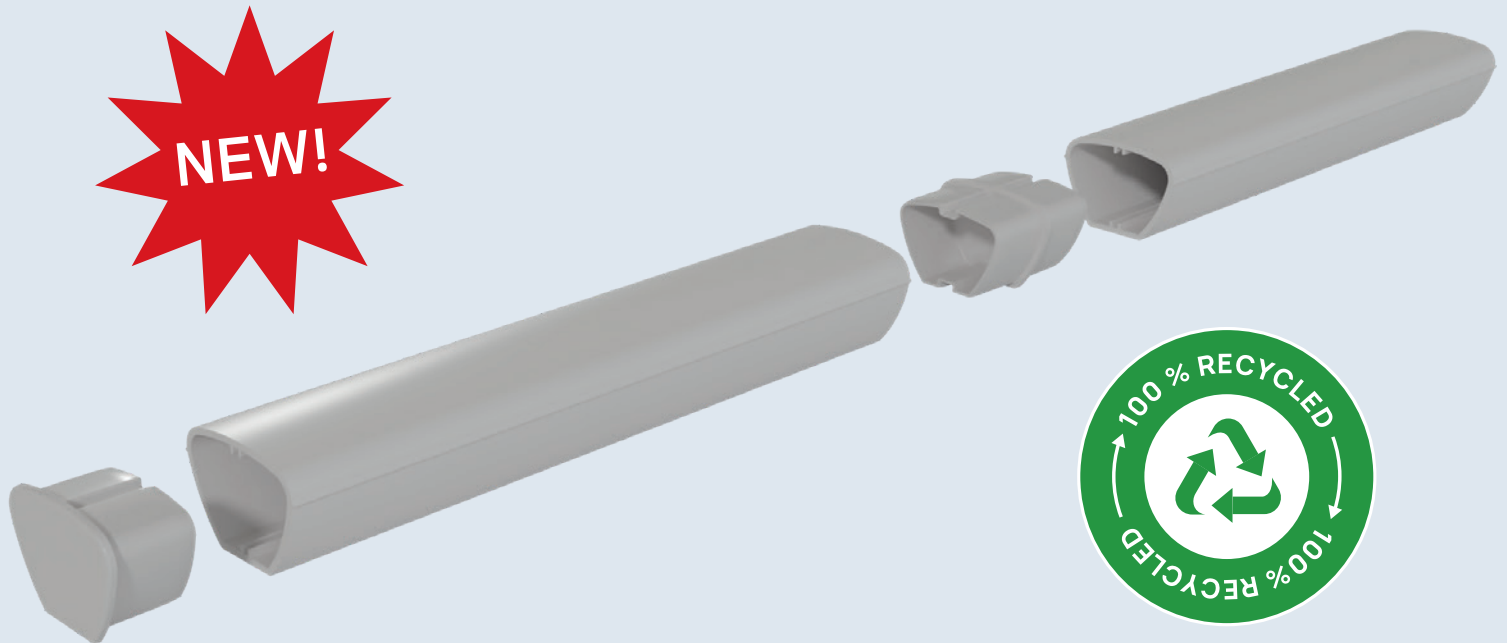


PERCH SYSTEM FOR LAYERS

MEETS THE DESIGN INSTRUCTIONS
FOR THE PERCH SHAPE



MAIN FACTS AT A GLANCE: PERCH SYSTEM FOR LAYERS

Systematic stable construction with tested quality

The new BARKU perch system for Layers offers excellent seating comfort thanks to its ergonomic contour. Due to the special shape, the perch cleans itself. The anti-slip bars on the sides allow animals to fly safely without getting injured. The perch can be extended as desired using very stable couplings. Furthermore, end caps ensure that the perch can be closed hygienically. The high-impact and UV-stabilized PVC material ensures that the perch cannot splinter and is unbreakable.



hygienic
+
ergonomic

ADVANTAGES

- Meets the implementation instructions "Design and requirements for the perch shape" of the Animal Welfare and Livestock Husbandry Ordinance. (§13 Paragraph 5 No.6)
- Tested at the Friedrich Löffler Institute (FLI) with a focus on safe footing and balance movements while resting on the bar. (EFSA, 2023; Pickel et al., 2010)
- Thanks to the generous and slightly rounded surface in the upper area, the balls of the feet are evenly loaded, so that problems with the feet are ruled out. The perch has an optimal tread width of 42 mm and a specially designed circumference of 118 mm.
- A physiological resting position is ensured so that the toes can reach around the bar and find good support.
- Specially developed contour allows the hens to rest "undisturbed" and walk safely, as the balls of their feet can rest fully on the perch.
- Long bridges can be solved with a metal strip. The integrated insertion grooves at the top and bottom of the perch serve this purpose.

