

The BARKU Pad-Climate-System

Being a full set with all required parts the BARKU Pad-Climate-System supplies stables, industrial facilities and greenhouses with the climate they need. It is deployed in areas where highly efficient cooling is required. All parts made of plastic material can be used for various cooling purposes and can be particularly deployed for evaporate cooling in poultry houses.



The new infinitely adjustable deflector spreads the water evenly across the whole Pad.



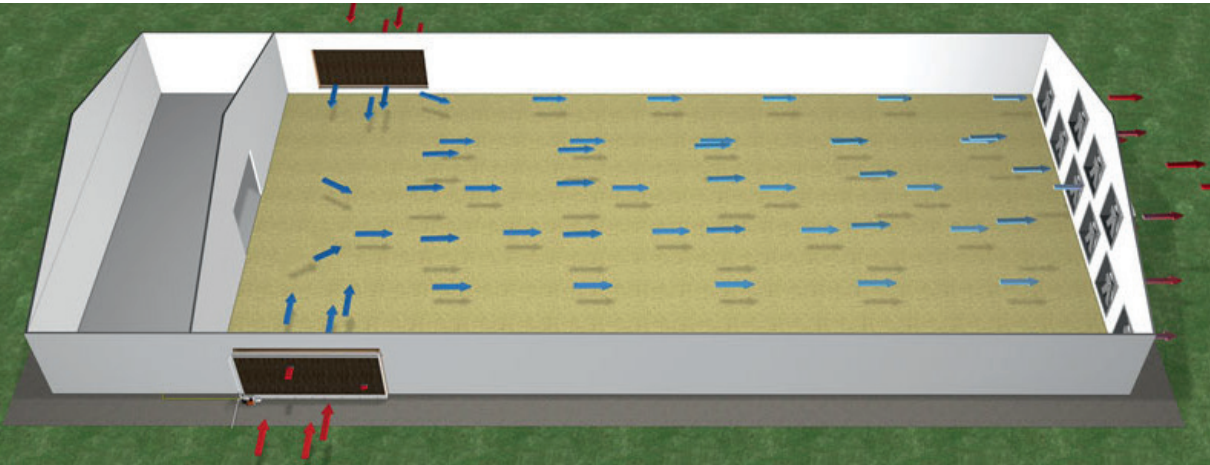
The system comes as a full set incl. supply unit.*

The technology of evaporative cooling

A pump station transports water through the system and leads it to the Pads from above via a spray pipe and the deflector. Then the water flows across the rippled surface of the Pads. Some of the water evaporates through the warm and dry

air flowing through the Pads. The remaining water is used for cleaning the Pads and flows back to the supply unit through a water channel system. The thermal energy required for evaporation is taken directly from the air. This is why the air coming from

the Pads is cool and moist both at the same time – without any extra energy supply from outside for the evaporation process: This is how the completely natural cooling effect is generated.



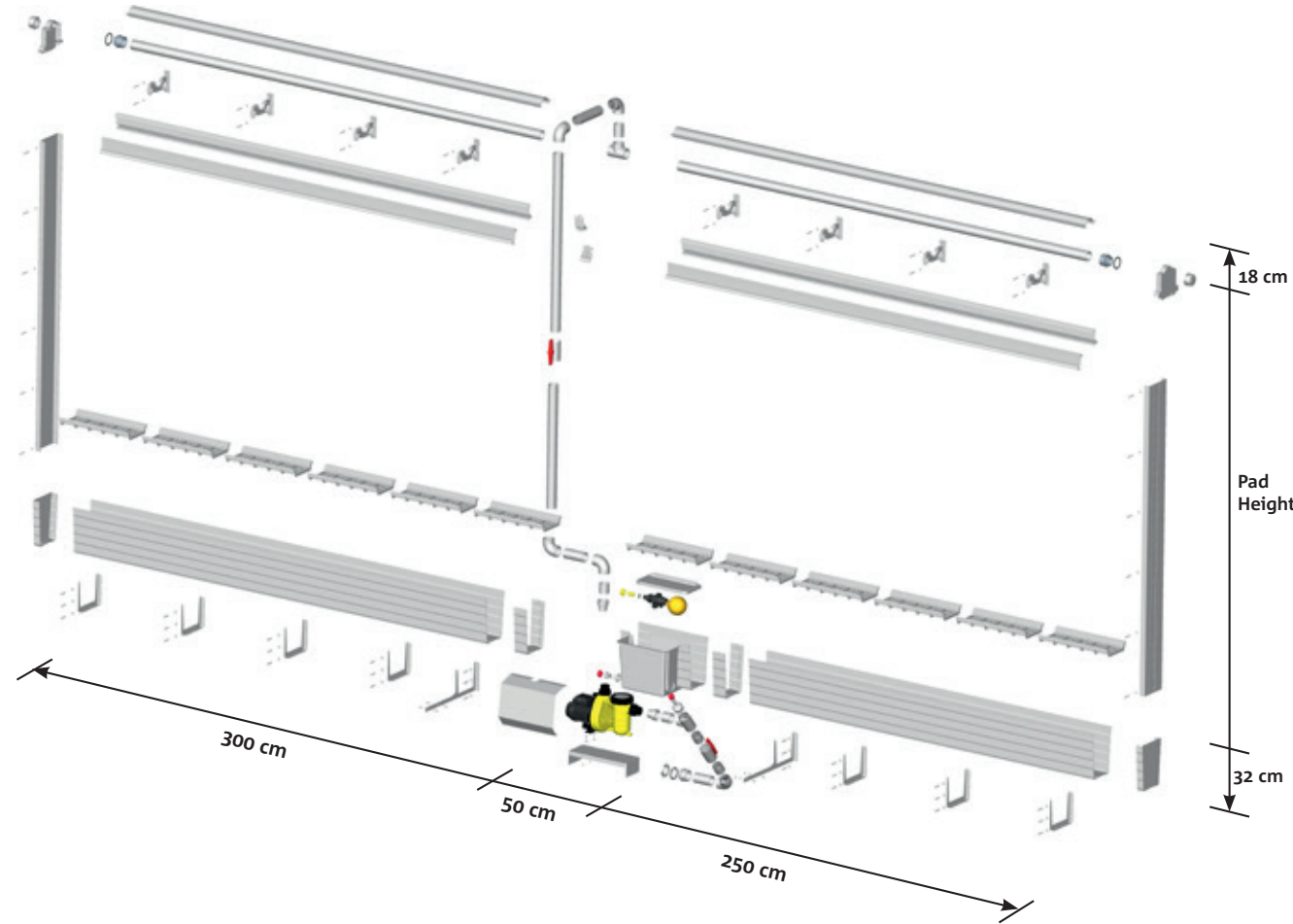
The right system for any stable size and facility: BARKU Pad-Climate-System is flexible, adjustable and efficient. Durability and easy installation make it your best choice for houses in hot climate zones.

* Pads are not included.

Technical data

The system is available in the following versions:

Article number	Description for paper Pads	The system is also available in versions with:
002 0 160 0	Pad System Basis Set 6" 1x230V 50Hz, 6 m	4 inch Pads
002 0 160 1	Pad System Basis Set 6" 1x230V 50Hz, 12 m	various pumps: 1x230V 50Hz 1x230V 60Hz 3x400V 50/60Hz
002 0 160 2	Pad System Basis Set 6" 1x230V 50Hz, 18 m	
002 0 160 3	Pad System Basis Set 6" 1x230V 50Hz, 24 m	



BARKU
Barnstorfer Kunststofftechnik

Barnstorfer Kunststofftechnik GmbH & Co. KG
Lubingstraße 10 · 49406 Barnstorf (Germany)
Tel.: +49 (0) 54 42 - 98 98-0 · Fax: +49 (0) 54 42 - 98 98-25
www.barku.de · info@barku.de

Barku Plastics, LLC
131 Corporate Drive, SW · Cleveland, TN 37311 · USA
Phone.: 423-614-0523 · Fax: 423-614-0524 · www.barkuplastics.com

09-13

Pad-Climate-System
for evaporative cooling

Your Advantages – from Installation through to Deployment

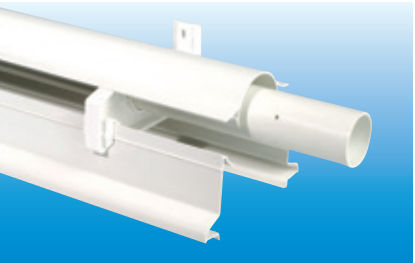
The Pad-Climate-System is a highly flexible and extremely rational solution for an efficient evaporation cooling and air moistening of stables and halls. Many advantages speak in favor of its deployment:

- No corrosion – all parts are made of uv-resistant PVC, brackets and screws are made of stainless steel.
- The water gutter contains all the water the system needs. No external water tank is required.
- Ideal water distribution across the whole Pad length with the special deflector shape.
- Quick and easy installation.
- The components are completely watertight.
- Water quantity and distribution can be adjusted by infinitely turning to the deflector.
- Available for Pad thickness in 4 or 6 inches.
- Well thought-out and highly stable system components allow for long-lasting deployment without any interruptions.
- Construction flexible in height up to 2,5 m and length up to 24 m.

Easy Installation

Gluingsurfaces and connecting parts are preformed, allowing easy do-it-yourself installation. It comes with detailed and illustrated instructions. Only the wall brackets contained in the system need to be installed, the major part of the

system is assembled through a clip-on construction or glued together. Up to an overall length of 24 meter system dimensions can be adjusted to your requirements.



Pad Guidance

The Pad guidance of the individual Pads are held firmly within the system.



Clip-on Function

All profiles can be easily attached to the pipe holder. Easy assembly and disassembly.



Water Supply via the BARKU Deflector

The deflector shape specially developed by BARKU guarantees for an extremely even distribution of the water across the whole length of the Pad system. Connecting multiple deflectors with each other is done through watertight connectors without the need for tools. By adjusting the deflector the desired water quantity can be controlled very accurately. Upon request wires can be lead into the already prepared holes in the gap between deflector and Pad guidance in order to prevent birds and parasites from nesting inside the system. Various heights can be selected, depending on the fauna on site.

The Supply Unit

The newly developed supply unit is the main part of the BARKU Pad-Climate-System.

Technical features:

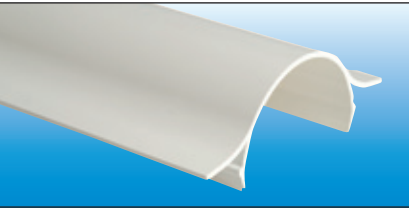
- fully pre-installed with self-sucking pump with 3/4 inch connection incl. hydro floating valve
- suitable for 4 inch as well as for 6 inch Pads
- integrated filter to keep away dirt
- Autonomous Pad cleaning cycle with fresh water supply

The supply unit is installed at the beginning of the assembly process. It can be attached at the middle as well as at the end of the Pad system and comes with all required connectors.



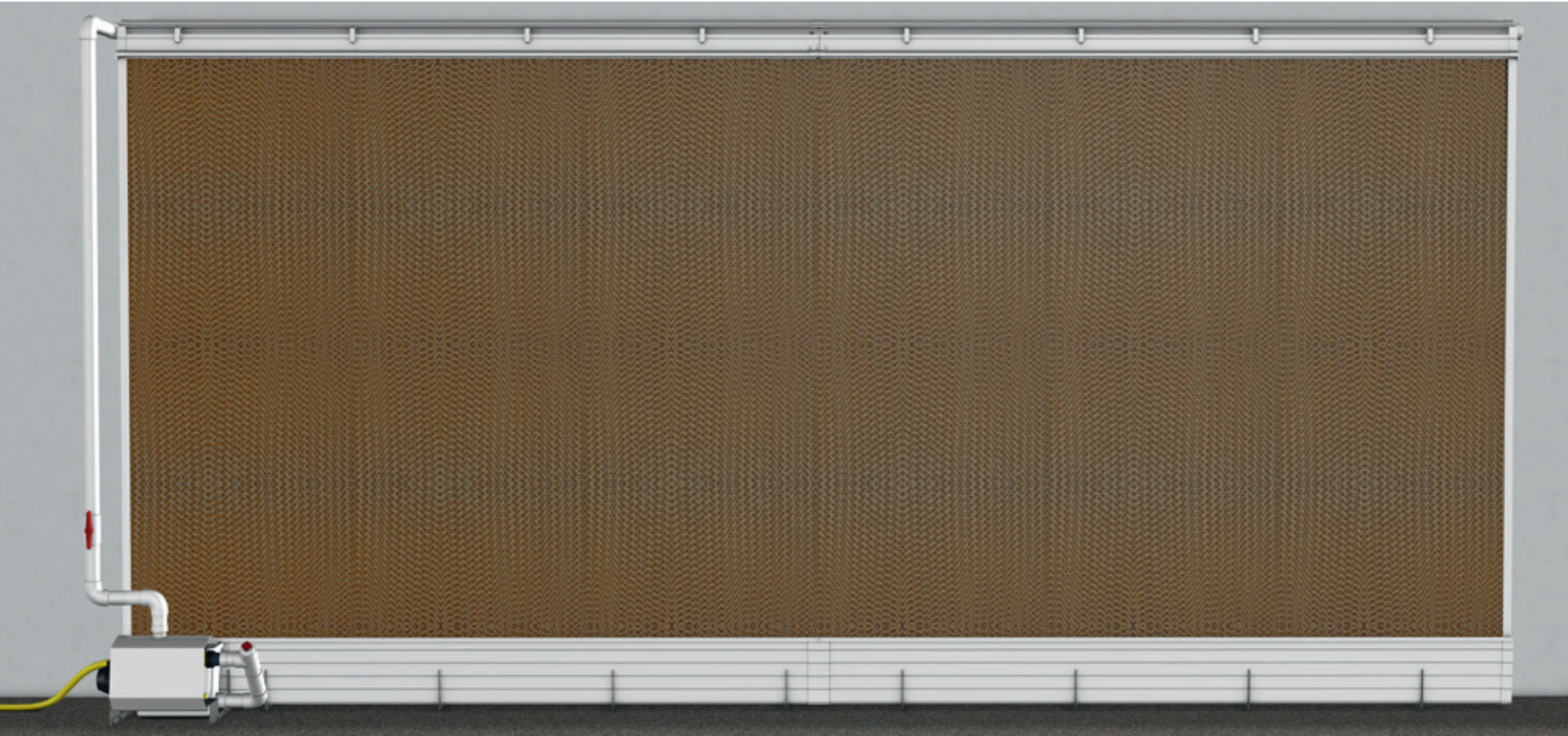
Water Distribution

The deflector allows us to get an optimal water distribution across all Pads.



Deflector Profile

The deflector profile features an optimized shape for best-possible “dripping” results.



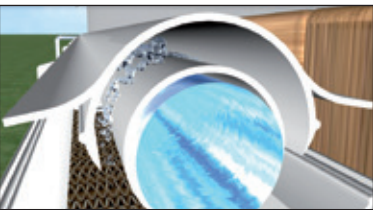
Supply Unit

Complete with piping accessory as well as console and pump.



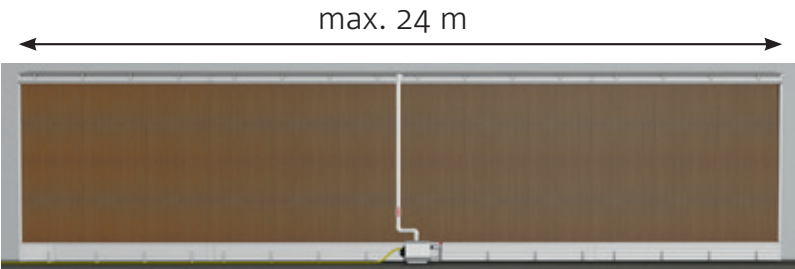
Main part of the Pad-Climate-System

The centrifugal pump and the central water storage element are a unit and can be installed as such.



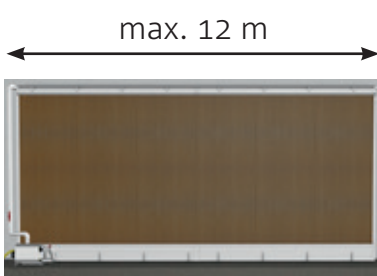
Easy Control

Water quantity and distribution can be adjusted by infinitely turning to the deflector.



Connection in the Middle

Depending on the stable layout and length, the supply unit can be attached in the middle or at the side.



Connection at the Side

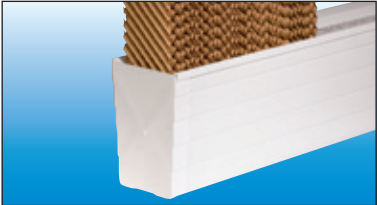
Water Tank

The water tank developed by BARKU contains all the water required for the system – no extra water tanks are needed. The covering of the water channel (4 inch and 6 inch) keeps the system free from vermin and prevents the whole system and the pump unit from getting contaminated. Apart from that, the gluing of the water channel components by leaving out the gaskets makes the Pad-Climate-System long-term watertight.



Cleaning Cycle

Via the extra 3/4 inch connector the cleaning cycle can be controlled absolutely independently.



Water Storage

The water channel and the storage contains all the water the system needs. No outside water tank is required.



Lids for the Water Storage

Perfect water returns to the newly designed Pad lids. The lids also prevent mice and rats intruding the system.